

# Natural Livestock Farming

An approach to reduce the use of anti-microbials  
and towards Sustainable Dairy Production



By: Katrien van't Hooft, DVM

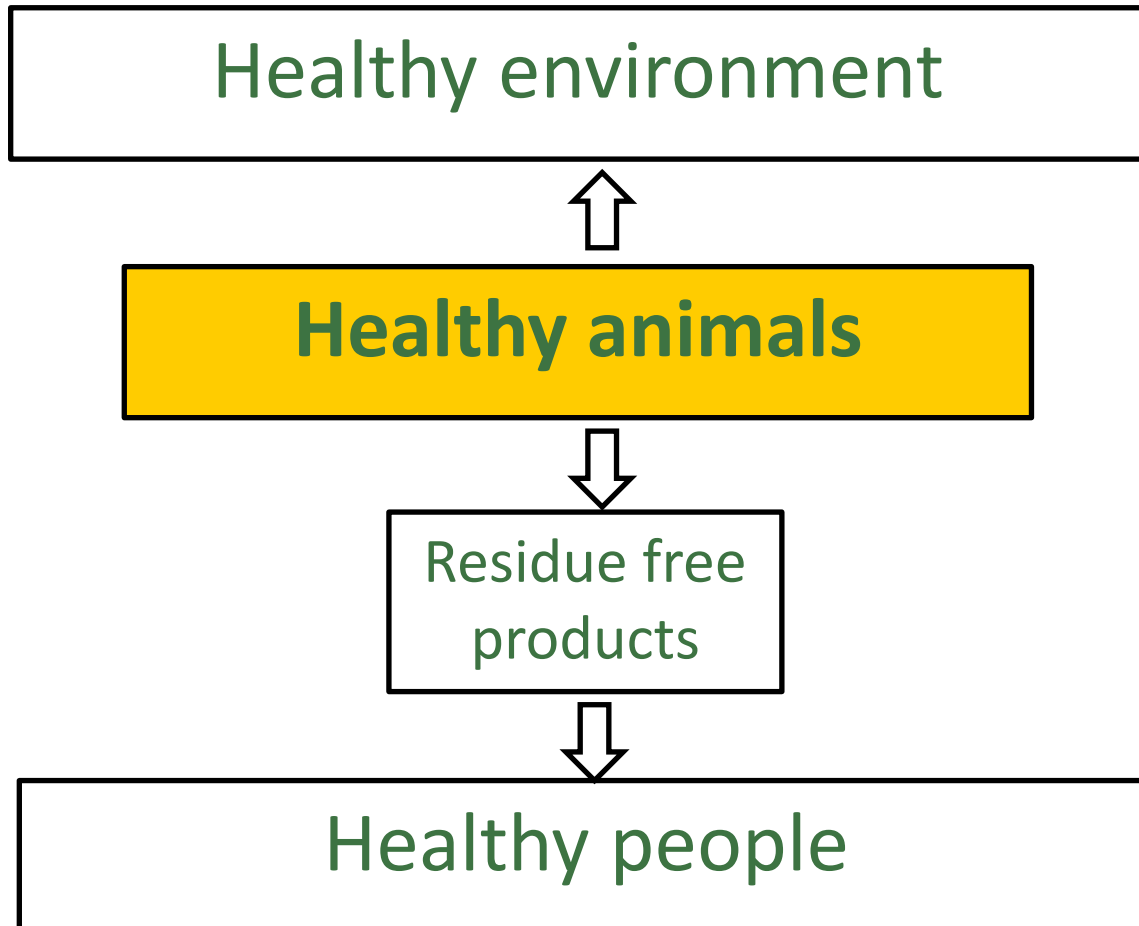
# What is Natural Livestock Farming?



**Vision:** Spearhead the One Health approach in livestock production:  
*Healthy Livestock - Healthy People  
Healthy Environment*

**Mission:** Safeguard, pilot and spread knowledge about natural ways to improve cattle health and wellbeing, leading to reduced use of antibiotics and other veterinary drugs, farm income, food security and biodiversity

# Natural Livestock Farming: a practical contribution to One Health



## How did NLF originate?

Ethnovet international network – start 1990's

Endogenous Livestock Development (ELD) network  
2005-2015

Exchange programs between 4 countries funded by  
Oxfam Novib / Prov. Overijssel 2014-2016

Natural Livestock Farming Foundation (NLF)  
formally registered October 2014

# **2014** E-Motive exchange veterinarians and farmers between Netherlands and India:



**Topic: use of herbs to reduce use of antibiotics**

**2015:** Exchange also included Ethiopia and Uganda

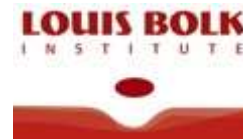
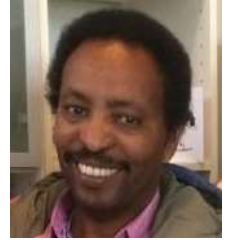


**Topic: effect (cross-) breeding  
on use of antibiotics & acaricides, and on milk quality**

# Leading to joint strategy: Natural Livestock Farming 5-layer strategy for Sustainable Dairy Farming



# NLF participating organisations in 2020





# NLF board members in 2020

## Administrative Board:



Dr. Unnifriskhnan  
Payyappalli



Hester Foppen



Arjen Dijks



Dr. Taffese Mesfin

## Executive Board:



Dr. Balakrisnan  
Nair



Dr. Getachew  
Gebru



Elisabeth  
Katushabe



Katrien van't Hooft

# How is NLF working?



International collaboration (Ethiopia, India, Netherlands, Uganda) combining a variety of farming systems

## **Building on a variety of knowledge systems**

Combining expertise from the grassroots (farmers and veterinarians) with scientific back-up

## **Pilots with implementation of NLF 5-layer strategy**

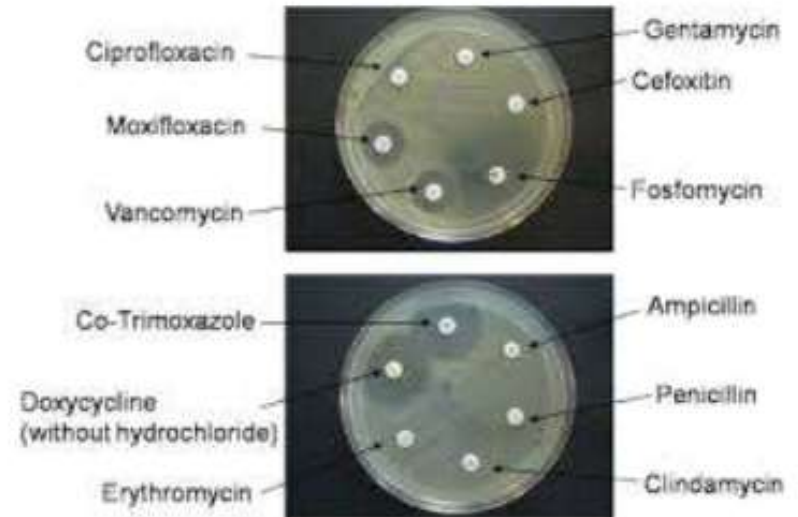
# Main challenges in cattle health

1. Sub-optimal animal management practices
2. Cattle breeds lacking resilience to environmental challenges
3. High and often uncontrolled use of antibiotics and other veterinary drugs
4. Residues in livestock products - affecting food safety
5. Reduced farm income due to low productivity, animal loss and cattle health care costs
6. Residues in environment: loss of biodiversity, affecting soil- & water quality
7. Loss of local knowledge and natural resources - including indigenous cattle breeds
8. Landscape changes - 33% of agricultural land world wide is used for livestock feed production
9. Impact of climate change and COVID-19

## If no action:

Antibiotics will no longer be effective for humans and animals alike

Local dairy markets can collapse in countries with insufficient residue control – affecting farmer livelihoods



# What is NLF doing towards Sustainable Dairy Farming?



Programs adapted to country priorities, with:

- Training for farmers and veterinarians
- Pilots for local cattle health challenges
- Action-research on NLF 5-layer strategy
- Exchange programs
- Linkage with governments, private sector and research
- Technical support to dairy programs
- Networking
- Scientific and popular publications



# Overview of results so far (1)

## TOTAL IN 4 COUNTRIES:

- Growing network in 4 countries
- Over 30.000 farmers and 2000 veterinarians trained on ethnovet practices and safe use of herbal products
- Growing adoption of concept by farmers, governments, dairy companies, research, NGO's and veterinary faculties
- Total budget for activities since 2014: over 3 million US\$

## INDIA

- Proof that EVP herbal training leads to reduced use of antibiotics, improved cattle health, milk quality and farm income
- EVP now promoted at national / government level, through National Dairy Development Board (NDDB), state veterinary departments and universities. Will reach 165 million dairy farmers

# Overview of results so far (2)



## ETHIOPIA

- Action research in Ethiopia has provided evidence of NLF approach for milk quality, farm income and role of women
- NLF strategy will be upscaled to 30.000 farmers in SNV dairy program

## NETHERLANDS

- Groups of farmers and veterinarians trained on safe use of herbal products – 80% of dairy farmers are using herbal products
- Herbs in grassland is a growing tendency
- Upcoming pilots on natural control of worms and ticks

## UGANDA

- Herbal tick control: first indication of efficiency
- Pilot local marketing and value addition
- Active promotion of Ankole Longhorn cattle breed

# Outcome: increased resilience



- **More resilient cattle:** cattle productive while able to withstand local challenges
- **More resilient cattle health system:** more farmer independence
- **More resilient livelihoods and food systems:** food security in the face of climate change & COVID-19, strengthened role of women
- **More resilient marketing:** consumer confidence in residue free products
- **More resilient human & animal health care:** reduced AMR
- **More resilient environment:** biodiversity, soil quality, water quality
- **More resilient country economics:** improved dairy production and reduced imports of livestock products & chemicals
- **Lower CO2 footprint in livestock production:** reduced use of cropland for livestock feed and improved soil fertility



## Where are we going as NLF ?

1. Provide world wide training to interested parties
2. Expand field level pilots and knowledge generation
3. Expand collaboration with governments and private enterprise
4. Upscale network and activities to other countries and continents
5. Include PhD and MSc student research
6. Collaborate with universities and schools

**Long-term vision: set up international  
NLF Centres of Expertise / NLF Academy**

# What can we offer you:



## 1. Training programs on:

- Herbal treatment of cattle diseases
- Animal management - lessons from NL
- Milk quality control
- Strategic breeding
- Cost reduction & value addition



## 2. Facilitation of:

- Exchange programs
- Support to dairy programs

## 3. Participate in NLF network & join the upscaling

**Get in touch if you want to support us or know more!**



**Together we can make change happen!**

**Get in touch at:  
[info@naturallivestockfarming.com](mailto:info@naturallivestockfarming.com)**